



To continue its program of quality and design improvement, the manufacturer reserves the right to change specifications, design or prices without notice and without incurring obligation.

# ILLUSTRATED PARTS LIST

STARTER KIT

Model Number

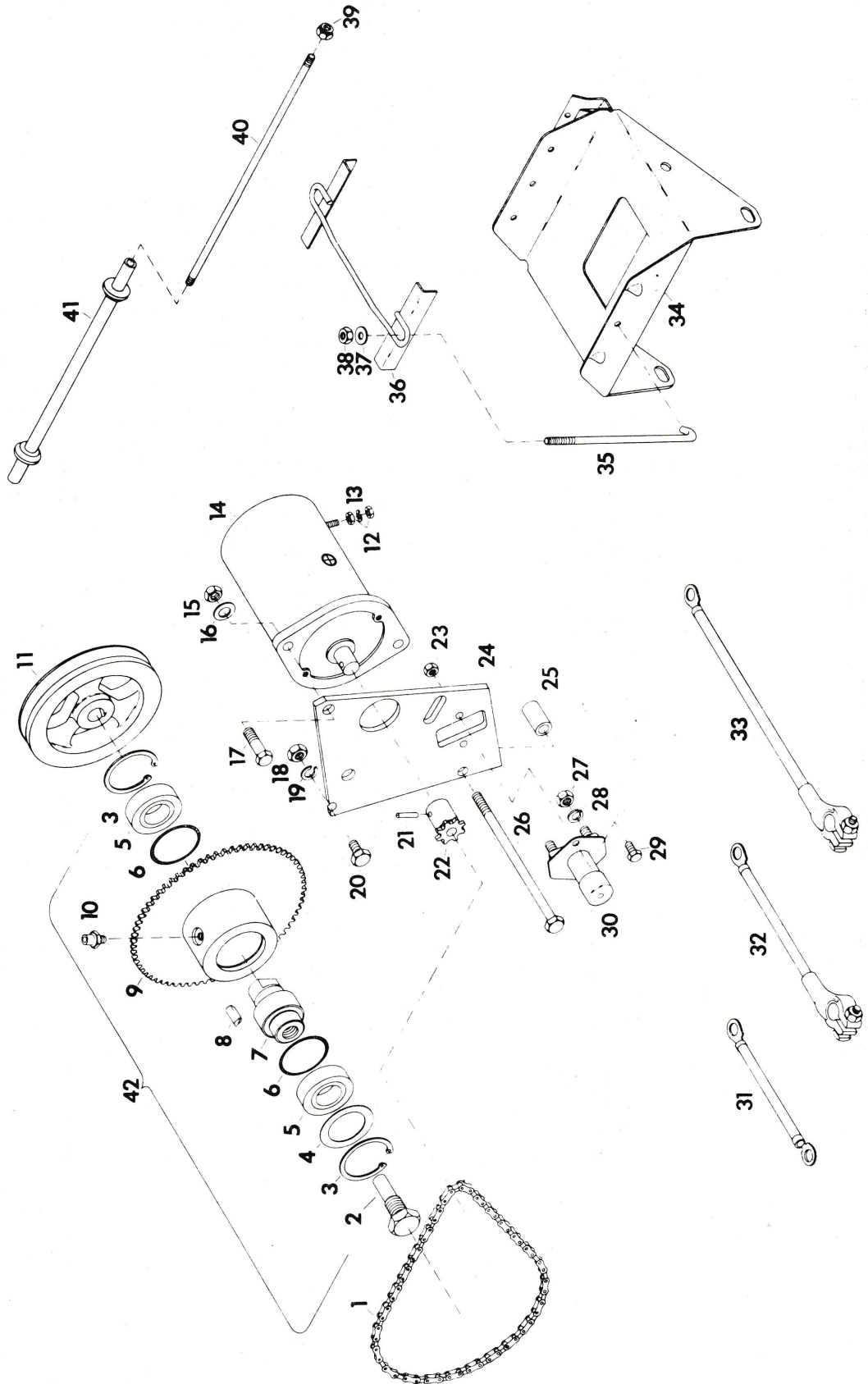
15601E1

Effective Date

3-15-73

Form Number

20047L1



<u>ITEM NO.</u>	<u>PART NO.</u>	<u>DESCRIPTION</u>
1	13483P1	Sprocket Chain
2	12111P1	Special Starter Bolt
3	13581P1	Retaining Ring
4	13324P1	Ball Bearing Shim
5	12493P1	Ball Bearing
6	12900P1	Clutch Spring
7	12112P1	Drive Nut
8	12899P1	Cam Roller
9	10198A1	Sprocket Weldment
10	12902P1	Starter Clutch Plug
11	13333P1	Fan Drive Pulley
12	124824	5/16-18 Hex Jam Nut
13	120214	5/16 Med. Sp. Type Lockwasher
14	12896P1	Starter Motor
15	120377	3/8-16 Finished Hex Nut 9/16 x 21/64 Thk
16	120394	13/32 ID x 13/16 OD x .065 Thk Washer
17	180124	3/8-16 x 1-1/4 Hex Head Bolt
18	120376	5/16-18 Regular Hex Nut
19	120214	5/16 Medium Sp. Type Lockwasher
20	180077	5/16-18 x 3/4 Hex Head Bolt
21	454563	3/16 x 7/8 Spring Pin
22	12891P1	Motor Sprocket
23	120375	1/4-20 Hex Nut
24	12892P1	Motor Plate
25	12905P1	Starter Motor Plate Spacer
26	180737	5/16-18 x 7 Hex Head Bolt
27	120377	3/8-16 Finished Hex Nut 9/16 x 21/64 Thk
28	120382	3/8 x .170 x .123 Sp. Lockwasher
29	180018	1/4-20 x 5/8 Hex Head Bolt Gr. 5
30	12484P1	Foot Switch
31	12897P1	Starter Switch Cable
32	6980P1	Ground Cable
33	12895P1	Ground Cable
34	8261A2	Battery Bracket Weldment
35	12894P1	Hold-Down Bolt
36	10633P1	Battery Hold-Down Clamp
37	446354	5/16 x 7/8 x .065 Flatwasher
38	10413P1	Wing Nut 1/4-20 Washer Insert
39	454750	1/4-28 Washer Insert Locknut
40	8252P1	Pivot Rod
41	8251A1	Pivot Tube Weldment
42	10183A1	Starter Clutch
NS	8254P1	Spring
NS	10629P1	Cable Tie
NS	124549	Woodruff Key #9